



HM Government



CORONAVIRUS

Have you travelled to the UK from the following places in the last 14 days:

- mainland China outside of Hubei province
- South Korea outside of the [special care zones](#)
- Cambodia
- Hong Kong
- Japan
- Laos
- Macau
- Malaysia
- Myanmar
- Singapore
- Taiwan
- Thailand
- Vietnam

and

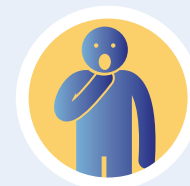
do you have any of these symptoms?



Cough



Fever



Shortness of
breath

If yes, to protect yourself and others please go home and search 'nhs coronavirus' for advice and to access the 111 online coronavirus service or call NHS 111.

Do not enter this building

Find out more at [nhs.uk/coronavirus](https://www.nhs.uk/coronavirus)